

Kanichi 1 mm Electrodes (Graphite, KRS-1002 and Graphene, KRS-G1002)

Disposable screen-printed electrodes. Suitable for working with microvolumes (100 μ L to 1 mL) or by dipping them in solution. Ideal for decentralized assays or to develop specific (bio)sensors.

Readily alleviates requirement presented by traditional electrode systems for laborious polishing and positioning.

Plastic substrate: L42 X W8 X D0.25 mm

Electric contacts: Graphite

The electrochemical configuration consists of:

Working electrode: Graphite / Graphene (1 mm diameter)

Counter electrode: Graphite

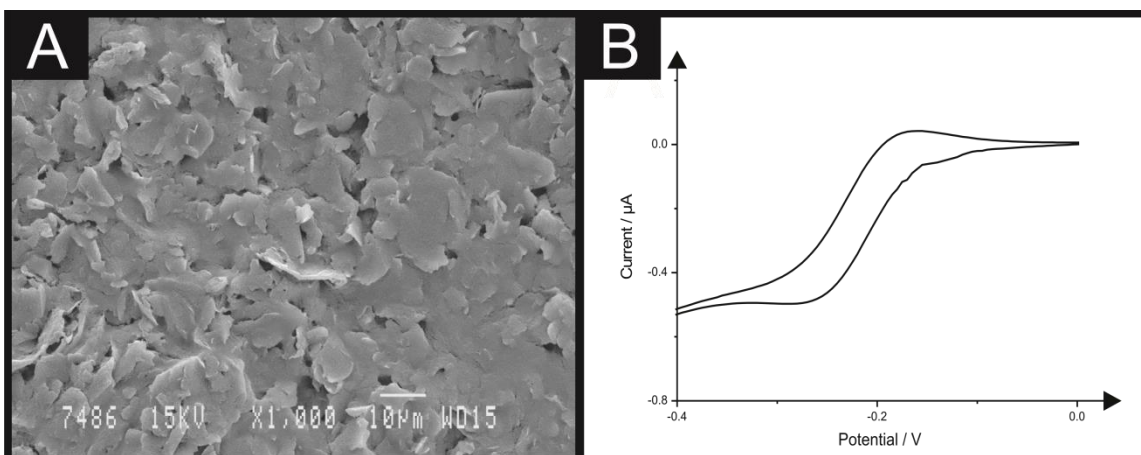
Reference electrode: Silver / Silver Chloride

Storage: The sensors should be stored at room temperature, in a dry environment and out of direct sunlight.



Imaging and electrochemical behaviour of Kanichi 1 mm screen-printed electrodes

Graphite



Scanning electron microscope image of a graphite Kanichi 1 mm screen-printed electrode (A) and a cyclic voltammogram (B) of 1 mM hexaammine-ruthenium (III) chloride in 0.1 M potassium chloride at 10 mV s^{-1} .